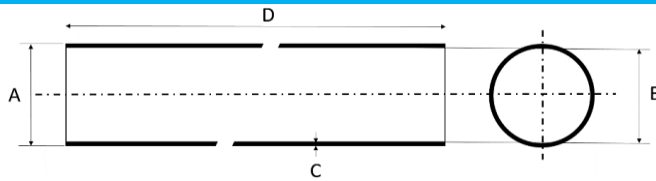


Product group:	INDUSTRIAL CARBON FIBER EPOXY TUBES ROUND	document nr.: PDSFCtubes round	
characteristics	High Strength Tube with Optimal Strength and Stiffness Outside Surface Winded Fibers Industrial Look	Issue Date: 18-4-2019	
Production process:	Pull Winding Technology	Revision: 0	
		Revision Date: 18-4 2019	

PRODUCT SPECIFICATIONS FOR ALL SPECIFIED PRODUCTS IN THIS DATASHEET



PRODUCT DIMENSIONS

A: Outer dimensions:	mm	Ø OUT +/- 0,2mm
B: Inner dimension:	mm	Ø IN +/- 0,2mm
C: Wall thickness:	mm	+/- 0,2 mm
D: Length	mm	+/- 2mm standard lengths 2000mm, 3000mm, 4000mm & 6000mm
E: Straightness	mm	2mm/1m
Surface finish:		Satin Look, not painted
Skin material:	Fabric	App 37° Braided Fibers
Core Material:		UD-0° fibers placed in length direction of the tube UD-App 90° fibers
Fibers:		High Strength Carbon Fiber Tow 3K
Resin:		standard grade Epoxy Resin
Glass Transition Temperature Tg		app. 65°C (temperature resistance)
Density:	gr/cm3	Approximate 1,76
Fiber Volume Content		

PRODUCT QUALITY

Visual Grade on surface	Industrial Finish Fiber Windings on surface The distance in between the winded fibers has some variation
Edges Cut at 90°	Cut at app. 90°
Product Packaging	Products grouped packed in standard CarbonWebshop packaging

The data in this sheets are approximate and based on general calculations and technical data sheets from material suppliers. The raw materials used can be replaced by materials with equivalent values. Refitech BV cannot take responsibility that products will meet the specification and will take no responsibility for any damages, directly or indirectly, related to the use of these products. If precise specifications such as strength and stiffness are required we strongly advises to test the products on the required functionality in the environment you are intend to use it



CarbonWebshop is a online sales platform from Refitech Composites www.refitech.nl

PRODUCT REFERENCES

Product Reference	HIGH PERFORMANCE CARBON FIBER EPOXY TUBES ROUND Definition	Product Dimensions in MM					Finishing	Specifics					
		Dia OUT	Dia IN	Wall	Length	Straight		Weight		Targetted Values			
		A	B	C	D	E		gr/m1	gr/tube	FV	TS Mpa	TM Gpa	Tg (DSC)
CBW 1816 2000	CFC HS Pull Winded Tube Round 18x16x2000 mm Satin	18,0	16,0	1,0	2.000	1mm/1m	Satin / No Finish	81	162	> 60	> 1.500	> 85	65°C
CBW 2220 2000	CFC HS Pull Winded Tube Round 22x20x2000 mm Satin	22,0	20,0	1,0	2.000	1mm/1m	Satin / No Finish	99	198	> 60	> 1.500	> 85	65°C
CBW 2624 2000	CFC HS Pull Winded Tube Round 26x24x2000 mm Satin	26,0	24,0	1,0	2.000	1mm/1m	Satin / No Finish	126	252	> 60	> 1.500	> 85	65°C
CBW 3028 2000	CFC HS Pull Winded Tube Round 30x28x2000 mm Satin	30,0	28,0	1,0	2.000	1mm/1m	Satin / No Finish	138	276	> 60	> 1.500	> 85	65°C
CBW 3432 2000	CFC HS Pull Winded Tube Round 34x32x2000 mm Satin	34,0	32,0	1,0	2.000	1mm/1m	Satin / No Finish	143	286	> 60	> 1.500	> 85	65°C
CBW 1816 3000	CFC HS Pull Winded Tube Round 18x16x3000 mm Satin	18,0	16,0	1,0	3.000	1mm/1m	Satin / No Finish	81	243	> 60	> 1.500	> 85	65°C
CBW 2220 3000	CFC HS Pull Winded Tube Round 22x20x3000 mm Satin	22,0	20,0	1,0	3.000	1mm/1m	Satin / No Finish	99	297	> 60	> 1.500	> 85	65°C
CBW 2624 3000	CFC HS Pull Winded Tube Round 26x24x3000 mm Satin	26,0	24,0	1,0	3.000	1mm/1m	Satin / No Finish	126	378	> 60	> 1.500	> 85	65°C
CBW 3028 3000	CFC HS Pull Winded Tube Round 30x28x3000 mm Satin	30,0	28,0	1,0	3.000	1mm/1m	Satin / No Finish	138	414	> 60	> 1.500	> 85	65°C
CBW 3432 3000	CFC HS Pull Winded Tube Round 34x32x3000 mm Satin	34,0	32,0	1,0	3.000	1mm/1m	Satin / No Finish	143	429	> 60	> 1.500	> 85	65°C
CBW 1816 4000	CFC HS Pull Winded Tube Round 18x16x4000 mm Satin	18,0	16,0	1,0	4.000	1mm/1m	Satin / No Finish	81	324	> 60	> 1.500	> 85	65°C
CBW 2220 4000	CFC HS Pull Winded Tube Round 22x20x4000 mm Satin	22,0	20,0	1,0	4.000	1mm/1m	Satin / No Finish	99	396	> 60	> 1.500	> 85	65°C
CBW 2624 4000	CFC HS Pull Winded Tube Round 26x24x4000 mm Satin	26,0	24,0	1,0	4.000	1mm/1m	Satin / No Finish	126	504	> 60	> 1.500	> 85	65°C
CBW 3028 4000	CFC HS Pull Winded Tube Round 30x28x4000 mm Satin	30,0	28,0	1,0	4.000	1mm/1m	Satin / No Finish	138	552	> 60	> 1.500	> 85	65°C
CBW 3432 4000	CFC HS Pull Winded Tube Round 34x32x4000 mm Satin	34,0	32,0	1,0	4.000	1mm/1m	Satin / No Finish	143	572	> 60	> 1.500	> 85	65°C
CBW 1816 6000	CFC HS Pull Winded Tube Round 18x16x6000 mm Satin	18,0	16,0	1,0	6.000	1mm/1m	Satin / No Finish	81	486	> 60	> 1.500	> 85	65°C
CBW 2220 6000	CFC HS Pull Winded Tube Round 22x20x6000 mm Satin	22,0	20,0	1,0	6.000	1mm/1m	Satin / No Finish	99	594	> 60	> 1.500	> 85	65°C
CBW 2624 6000	CFC HS Pull Winded Tube Round 26x24x6000 mm Satin	26,0	24,0	1,0	6.000	1mm/1m	Satin / No Finish	126	756	> 60	> 1.500	> 85	65°C
CBW 3028 6000	CFC HS Pull Winded Tube Round 30x28x6000 mm Satin	30,0	28,0	1,0	6.000	1mm/1m	Satin / No Finish	138	828	> 60	> 1.500	> 85	65°C
CBW 3432 6000	CFC HS Pull Winded Tube Round 34x32x6000 mm Satin	34,0	32,0	1,0	6.000	1mm/1m	Satin / No Finish	143	858	> 60	> 1.500	> 85	65°C

TUBES ON REQUEST ALSO AVAILABLE IN 1,5MM WALL THICKNESS

FV = Fiber volume content in % | TS = Tesile Strength in Mpa | TM = tensile modulus in Gpa | Tg = glass temperature in °C