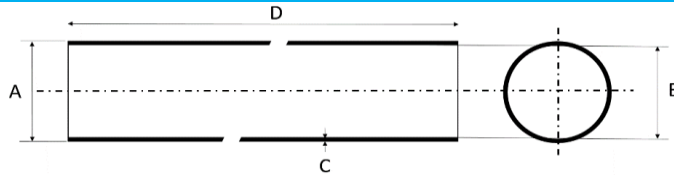


Product group:	HIGH PERFORMANCE CARBON FIBER EPOXY TUBES ROUND	document nr.: PDSFCtubes round	
characteristics	High Strength Tube with Optimal Bending and Torsional Stiffness	Issue Date: 15-12-2012	
	Transparent Painted	Revision: 2	
Production process:	Prepreg Lamination Technology	Revision Date: 18-4 2019	

PRODUCT SPECIFICATIONS FOR ALL SPECIFIED PRODUCTS IN THIS DATASHEET



PRODUCT DIMENSIONS

A: Outer dimensions:	mm	≤ 40mm Ø OUT +/- 0,2 mm >40mm Ø OUT +/- 0,3 mm
B: Inner dimension:	mm	Ø IN +/- 0,2mm
C: Wall thickness:	mm	≤ Ø OUT 40mm +/- 0,2 mm > Ø OUT 40mm +/- 0,3 mm
D: Length	mm	+/- 2mm
E: Straightness	mm	Product Specific
Surface finish:	Paint	Glossy UV Protection Paint
Skin material:	Fabric	T= Twill P=Plain
Core Material:		App. 80% UD-0° fibers placed in length direction of the tube
		App. 20% UD-90° fibers placed 90° on length direction of tube
Fibers:		High Strength Carbon Fiber Tow 3K
Resin:		standard grade Epoxy Resin
Glass Transition Temperature		Min. 80°C (temperature resistance)
Density:	gr/cm3	Approximate 1,76

PRODUCT QUALITY

Visual Grade on surface		Painted Surface Industrial Grade
		Small pinholes may occur, this is due to production process
Fiber Fabric Weave		The fabric may have some spread
Edges Cut at 90°		Cut at app. 90°
Product Packaging		Product individually packed and grouped packed in standard CarbonWebshop packaging

The data in this sheets are approximate and based on general calculations and technical data sheets from material suppliers. The raw materials used can be replaced by materials with equivalent values. Refitech BV cannot take responsibility that products will meet the specification and will take no responsibility for any damages, directly or indirectly, related to the use of these products. If precise specifications such as strength and stiffness are required we strongly advises to test the products on the required functionality in the environment you are intend to use it



CarbonWebshop is an online sales platform, part of Refitech Composites | www.refitech.nl

PRODUCT REFERENCES

Product	HIGH PERFORMANCE CARBON FIBER EPOXY TUBES ROUND	Product Specific Dimensions in MM					Finishing		Specifics	
		Dia OUT	Dia IN	Wall	Length	Straight	Skin Fabric	Paint Finish	Weight gr/m	Stiffness EI N mm2
Reference	Definition	A	B	C	D	E				
CBU 0604 1005 TG	Carbon Fiber Epoxy Tube Round 06x04x1000 Twill Glossy Paint	6,0	4,0	1,0	1.005	3mm/1m	Twill	Glossy	25	na x 10 ⁶
CBU 0806 1005 TG	Carbon Fiber Epoxy Tube Round 08x06x1000 Twill Glossy Paint	8,0	8,0	1,0	1.005	3mm/1m	Twill	Glossy	34	8,90 x 10 ⁶
CBU 1008 1050 TG	Carbon Fiber Epoxy Tube Round 10x08x2010 Twill Glossy Paint	10,0	8,0	1,0	1.005	3mm/1m	Twill	Glossy	22	> 18,8 x 10 ⁶
CBU 1008 2010 TG	Carbon Fiber Epoxy Tube Round 10x08x2010 Twill Glossy Paint	10,0	8,0	1,0	2.010	3mm/1m	Twill	Glossy	44	18,80 x 10 ⁶
CBU 1008 2010 TM	Carbon Fiber Epoxy Tuber Round 10x08x2010 Twill Matt Paint	10,0	8,0	1,0	2.010	3mm/1m	Twill	Matt	44	18,80 x 10 ⁶
CBU 1209 1050 TG	Carbon Fiber Epoxy Tube Round 12x09x1005 Twill Glossy Paint	12,0	9,0	1,5	1.005	2mm/1m	Twill	Glossy	38	> 45,2 x 10 ⁶
CBU 1209 2010 TG	Carbon Fiber Epoxy Tube Round 12x09x2010 Twill Glossy Paint	12,0	9,0	1,5	2.010	2mm/1m	Twill	Glossy	76	45,20 x 10 ⁶
CBU 1210 1050 TG	Carbon Fiber Epoxy Tube Round 12x10x1005 Twill Glossy Paint	12,0	10,0	1,0	1.005	2mm/1m	Twill	Glossy	26	> 34,3 x 10 ⁶
CBU 1210 2010 TG	Carbon Fiber Epoxy Tube Round 12x10x2010 Twill Glossy Paint	12,0	10,0	1,0	2.010	2mm/1m	Twill	Glossy	51	34,30 x 10 ⁶
CBU 1512 1005 TG	Carbon Fiber Epoxy Tube Round 15x12x1005 Twill Glossy Paint	15,0	12,0	1,5	1.005	2mm/1m	Twill	Glossy	48	> 95,4 x 10 ⁶
CBU 1512 2010 TG	Carbon Fiber Epoxy Tube Round 15x12x2010 Twill Glossy Paint	15,0	12,0	1,5	2.010	2mm/1m	Twill	Glossy	97	95,40 x 10 ⁶
CBU 1513 1005 TG	Carbon Fiber Epoxy Tube Round 15x13x1005 Twill Glossy Paint	15,0	13,0	1,0	1.005	2mm/1m	Twill	Glossy	33	> 70,4 x 10 ⁶
CBU 1513 2010 TG	Carbon Fiber Epoxy Tube Round 15x13x2010 Twill Glossy Paint	15,0	13,0	1,0	2.010	2mm/1m	Twill	Glossy	65	70,40 x 10 ⁶
CBU 1613 1005 TG	Carbon Fiber Epoxy Tube Round 16x13x1005 Twill Glossy Paint	16,0	13,0	1,5	1.005	2mm/1m	Twill	Glossy	51	> 118 x 10 ⁶
CBU 1613 2010 TG	Carbon Fiber Epoxy Tube Round 16x13x2010 Twill Glossy Paint	16,0	13,0	1,5	2.010	2mm/1m	Twill	Glossy	101	118,00 x 10 ⁶
CBU 1815 1005 TG	Carbon Fiber Epoxy Tube Round 18x15x1005 Twill Glossy Paint	18,0	15,0	1,5	1.005	2mm/1m	Twill	Glossy	57	> 173,4 x 10 ⁶
CBU 1815 2010 TG	Carbon Fiber Epoxy Tube Round 18x15x2010 Twill Glossy Paint	18,0	15,0	1,5	2.010	2mm/1m	Twill	Glossy	114	173,40 x 10 ⁶
CBU 1816 1005 TG	Carbon Fiber Epoxy Tube Round 18x16x1005 Twill Glossy Paint	18,0	16,0	1,0	1.005	2mm/1m	Twill	Glossy	40	> 125,8 x 10 ⁶
CBU 1816 2010 TG	Carbon Fiber Epoxy Tube Round 18x16x2010 Twill Glossy Paint	18,0	16,0	1,0	2.010	2mm/1m	Twill	Glossy	79	125,80 x 10 ⁶
CBU 2017 1005 TG	Carbon Fiber Epoxy Tube Round 20x17x1005 Twill Glossy Paint	20,0	17,0	1,5	1.005	2mm/1m	Twill	Glossy	63	> 244 x 10 ⁶
CBU 2017 2010 TG	Carbon Fiber Epoxy Tube Round 20x17x2010 Twill Glossy Paint	20,0	17,0	1,5	2.010	2mm/1m	Twill	Glossy	126	244,00 x 10 ⁶
CBU 2018 1005 TG	Carbon Fiber Epoxy Tube Round 20x18x1005 Twill Glossy Paint	20,0	17,0	1,5	1.005	2mm/1m	Twill	Glossy	44	> 175,6 x 10 ⁶
CBU 2018 2010 TG	Carbon Fiber Epoxy Tube Round 20x18x2010 Twill Glossy Paint	20,0	17,0	1,5	2.010	2mm/1m	Twill	Glossy	88	175,60 x 10 ⁶
CBU 2220 1005 TG	Carbon Fiber Epoxy Tube Round 22x20x1005 Twill Glossy Paint	22,0	20,0	1,0	1.005	2mm/1m	Twill	Glossy	100	na x 10 ⁶
CBU 2220 2010 TG	Carbon Fiber Epoxy Tube Round 22x20x2010 Twill Glossy Paint	22,0	20,0	1,0	2.010	2mm/1m	Twill	Glossy	200	na x 10 ⁶
CBU 2522 1005 TG	Carbon Fiber Epoxy Tube Round 25x22x1005 Twill Glossy Paint	25,0	23,0	1,0	1.005	2mm/1m	Twill	Glossy	86	> 498,9 x 10 ⁶

CBU 2522 2010 TG	Carbon Fiber Epoxy Tube Round 25x22x2010 Twill Glossy Paint	25,0	23,0	1,0	2.010	2mm/1m	Twill	Glossy	172	498,90	x 10 ⁶		
CBU 2523 1005 TG	Carbon Fiber Epoxy Tube Round 25x23x1005 Twill Glossy Paint	25,0	23,0	1,0	1.005	2mm/1m	Twill	Glossy	123	na	x 10 ⁶		
CBU 2523 2010 TG	Carbon Fiber Epoxy Tube Round 25x23x2010 Twill Glossy Paint	25,0	23,0	1,0	2.010	2mm/1m	Twill	Glossy	245	na	x 10 ⁶		
CBU 2523 2010 TM	Carbon Fiber Epoxy Tube Round 25x23x2010 Twill Matt Paint	25,0	23,0	1,0	2.010	2mm/1m	Twill	Matt	245	na	x 10 ⁶		
CBU 3027 1005 TG	Carbon Fiber Epoxy Tube Round 30x27x1005 Twill Glossy Paint	30,0	27,0	1,5	1.005	2mm/1m	Twill	Glossy	201		x 10 ⁶		
CBU 3027 2010 TG	Carbon Fiber Epoxy Tube Round 30x27x2010 Twill Glossy Paint	30,0	27,0	1,5	2.010	2mm/1m	Twill	Glossy	402		x 10 ⁶		
CBU 3028 1005 TG	Carbon Fiber Epoxy Tube Round 30x28x1005 Twill Glossy Paint	30,0	28,0	1,0	1.005	2mm/1m	Twill	Glossy	71	> 623,3	x 10 ⁶		
CBU 3028 2010 TG	Carbon Fiber Epoxy Tube Round 30x28x2010 Twill Glossy Paint	30,0	28,0	1,0	2.010	2mm/1m	Twill	Glossy	142	623,30	x 10 ⁶		
CBU 3532 1005 TG	Carbon Fiber Epoxy Tube Round 35x32x1005 Twill Glossy Paint	35,0	32,0	1,5	1.005	2mm/1m	Twill	Glossy	238				
CBU 3532 2010 TG	Carbon Fiber Epoxy Tube Round 35x32x2010 Twill Glossy Paint	35,0	32,0	1,5	2.010	2mm/1m	Twill	Glossy	475				
CBU 3533 1005 TG	Carbon Fiber Epoxy Tube Round 35x33x1005 Twill Glossy Paint	35,0	33,0	1,0	1.005	2mm/1m	Twill	Glossy	170				
CBU 3533 2010 TG	Carbon Fiber Epoxy Tube Round 35x33x2010 Twill Glossy Paint	35,0	33,0	1,0	2.010	2mm/1m	Twill	Glossy	340				
CBU 4036 1005 TG	Carbon Fiber Epoxy Tube Round 40x36x1005 Twill Glossy Paint	40,0	36,0	2,0	1.005	2mm/1m	Twill	Glossy	181	> 2,8	x 10 ⁹		
CBU 4036 2010 TG	Carbon Fiber Epoxy Tube Round 40x36x2010 Twill Glossy Paint	40,0	36,0	2,0	2.010	2mm/1m	Twill	Glossy	362	2,80	x 10 ⁹		
CBU 5046 1005 TG	Carbon Fiber Epoxy Tube Round 50x46x1005 Twill Glossy Paint	50,0	46,0	2,0	1.005	3mm/1m	Twill	Glossy	231	> 5,7	x 10 ⁹		
CBU 5046 2010 TG	Carbon Fiber Epoxy Tube Round 50x46x2010 Twill Glossy Paint	50,0	46,0	2,0	2.010	3mm/1m	Twill	Glossy	461	5,70	x 10 ⁹		
CBU 6054 1005 TG	Carbon Fiber Epoxy Tube Round 60x54x1005 Twill Glossy Paint	60,0	54,0	3,0	1.005	3mm/1m	Twill	Glossy	381	> 14,2	x 10 ⁹		
CBU 6054 2010 TG	Carbon Fiber Epoxy Tube Round 60x54x2010 Twill Glossy Paint	60,0	54,0	3,0	2.010	3mm/1m	Twill	Glossy	761	14,20	x 10 ⁹		
CBU 6056 1005 TG	Carbon Fiber Epoxy Tube Round 60x56x1005 Twill Glossy Paint	60,0	56,0	2,0	1.005	3mm/1m	Twill	Glossy	276	> 10	x 10 ⁹		
CBU 6056 2010 TG	Carbon Fiber Epoxy Tube Round 60x56x2010 Twill Glossy Paint	60,0	56,0	2,0	2.010	3mm/1m	Twill	Glossy	551	10,00	x 10 ⁹		
CBU 8074 1005 TG	Carbon Fiber Epoxy Tube Round 80x74x1005 Twill Glossy Paint	80,0	74,0	3,0	1.005	3mm/1m	Twill	Glossy	513	> 35	x 10 ⁹		
CBU 8074 2010 TG	Carbon Fiber Epoxy Tube Round 80x74x2010 Twill Glossy Paint	80,0	74,0	3,0	2.010	3mm/1m	Twill	Glossy	1.025	35,00	x 10 ⁹		
CBU 8076 1005 TG	Carbon Fiber Epoxy Tube Round 80x76x1005 Twill Glossy Paint	80,0	76,0	2,0	1.005	3mm/1m	Twill	Glossy	352	> 24,2	x 10 ⁹		
CBU 8076 2010 TG	Carbon Fiber Epoxy Tube Round 80x76x2010 Twill Glossy Paint	80,0	76,0	2,0	2.010	3mm/1m	Twill	Glossy	703	24,20	x 10 ⁹		